



Biosecurity alert: Freshwater gold clam

(Corbicula fluminea)

The pest and its impacts

The freshwater gold clam, or Asian clam, is an invasive freshwater species. It can be transported around the world via ballast water or the aquarium trade. It's an invasive species in many countries, with the potential to become a major pest in Western Australia.

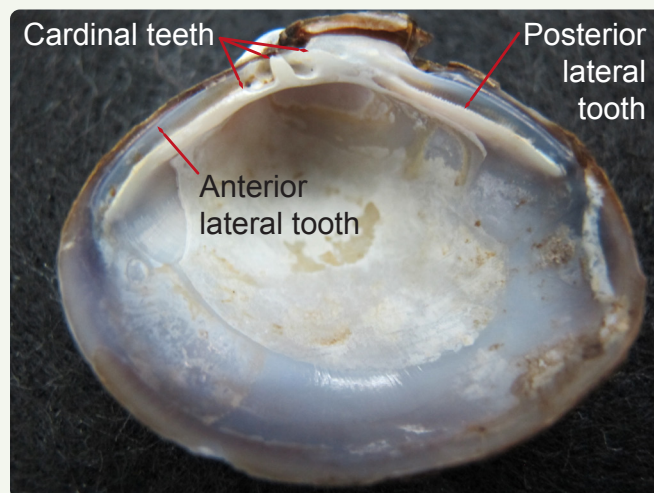
It has a rapid growth rate and high reproductive rate. When combined with an ability to broadcast its larvae over a large area using water flows in rivers, it can colonise a wide range of habitats and have a wide range of impacts.



LOOK for this pest

The freshwater gold clam has been detected along the Brisbane River in Queensland, before this it had not been positively detected in Australia.

It can be identified by its distinct, evenly-spaced concentric ridges on the shell. Juvenile shells are oval-shaped, while adult shells become more triangular. Colourations range from yellow-green to light brown, and olive-green to black.



Shells have 3 cardinal teeth and the posterior and anterior lateral teeth are serrated, not smooth.

The outermost layer of the shell can flake off, revealing a white layer underneath which is not typical for most native species of clam. It can grow to a shell length of 50 to 65 mm, although usually less than 25 mm.

This pest poses a risk to WA as it can displace native clams, diminish water quality and damage water infrastructure due to its ability to block pipes.

How you can help: look, act, report

- Keep your hull and fishing equipment clean and free of fouling.
- Clean your boat and equipment on land and ensure fouling aquatic life does not re-enter water when cleaning.
- Make sure your boat and equipment are dry before moving to a new location.
- Check for this pest, take photos and report if you see anything unusual.



REPORT your observations

Your reports help protect WA. Contact FishWatch 24/7 or submit photos via MyPestGuide®.



Scan to
report via
MyPestGuide®



Important disclaimer

The Chief Executive Officer of the Department of Primary Industries and Regional Development and the State of Western Australia accept no liability whatsoever by reason of negligence or otherwise arising from the use or release of this information or any part of it.

Copyright © State of Western Australia (Department of Primary Industries and Regional Development), 2025.