



# Biosecurity alert: Wakame

*(Undaria pinnatifida)*

Photo credit: John Barker

## The pest and its impacts

Wakame is an invasive seaweed that forms dense forests. It's not found in Western Australia and could cause major harm to native species if introduced. The main pathway is through biofouling on boats.

Wakame is now found in South Australia, Victoria and Tasmania.



## LOOK for this pest

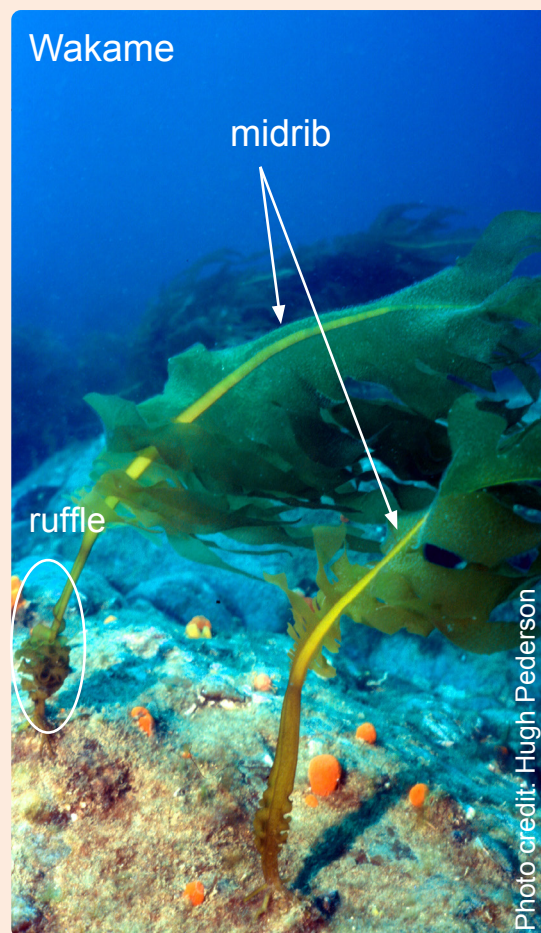
Wakame is a green to golden-brown coloured algae with smooth thin blades that have an obvious midrib running up the length of the blade. It attaches to surfaces with a claw-like attachment and mature plants have a ruffle towards the base. Wakame can grow anywhere between 1 to 3 metres long.

## Where you'll find it

- Low tide mark to 20 metres.
- Rocky areas and reefs.
- Growing on artificial structures like marinas, pylons, moorings, aquaculture equipment and similar.

## Similar species

Kelp (*Ecklonia radiata*) is a native species. It's a brown algae but doesn't have a midrib or ruffle. It also has spiny-looking fronds and can grow up to 1 metre.



## How you can help: look, act, report

- Check for this pest, take photos and report if you see anything unusual.
- If possible, collect a sample in a plastic bag and freeze it.
- Keep your hull and fishing equipment clean and free of fouling.
- Clean your boat and equipment on land and ensure fouling aquatic life does not re-enter water when cleaning.
- Make sure your boat and equipment are dry before moving to a new location.
- Learn more about reducing the risk of marine pests via the [Australian Government marine pests website](#).



## REPORT your observations

Your reports help protect WA.  
Contact FishWatch 24/7 or submit photos via MyPestGuide®.



Scan to  
report via  
MyPestGuide®



## Important disclaimer

The Chief Executive Officer of the Department of Primary Industries and Regional Development and the State of Western Australia accept no liability whatsoever by reason of negligence or otherwise arising from the use or release of this information or any part of it.

Copyright © State of Western Australia (Department of Primary Industries and Regional Development), 2025