




Department of
Primary Industries and
Regional Development

Protect
Grow
Innovate

Co-benefits Portal User Guide



Contents

About the Co-benefits Portal	3
Need help?	3
Additional Mapping Resources	3
Selecting data	4
Map navigation	4
Display page	5
Measurement 	5
Add Data	6
Draw 	6
Notes about drawing	6
Select drawing tools	6
Text & draw colour, width & transparency	6
Text boxes	7
Area & perimeter measurements	8
Deleting drawn areas & text	8
Info Summary	10
My Location 	10
Default Extent 	10
Zoom in and out 	10
Layers toolbar	10
Investment priorities 	10
The following toolbars and datasets are available in the Portal:	11
General	12
Print 	12
More 	13
Learn more about map attributes	14

About the Co-benefits Portal

The Department of Primary Industries and Regional Development (DPIRD) has developed the Co-benefit Portal to assist carbon farming and nature repair market project proponents to identify the features of an area where a project is proposed to be developed.

Access the Portal by clicking this link: [Co-benefits Information Portal](#)

It is a spatial data and digital mapping service that gathers publicly available information from a variety of sources to assist proponents identify the project's potential to deliver investment and environmental priorities.

The data sets in this Portal are collected from a range of state government agencies. Access the [full list of data sets](#) for more information.

Some of the data sets included in the Portal are the result of a coarse-grain, landscape-scale analysis. A degree of spatial flexibility around the edges of corridors or locations should be used to consider this disparity in scale when assessing a project's feasibility.

Proponents should use the Portal in conjunction with other information sources and on-ground evidence to validate the potential co-benefits associated with a project.

Full instructions are contained in this document that will help you navigate and use the wide range of information available.

Need help?

Any queries regarding the portal or the data, including those relating to Biodiversity and Conservation, email carbonfarming@dpird.wa.gov.au.

Additional Mapping Resources

[The Natural Resource Info \(WA\)](#) digital mapping tool provides access to digital mapping and information for natural resources across Western Australia. This information may be used for regional and strategic planning, and for identifying areas needing more intensive assessment.

Selecting data

Located on the Portal header (top right of your screen) there are six data theme icons. You can start your search by browsing these themes.

This Portal is structured to provide data for DPIRD's priority co-benefits:



Biodiversity and conservation



Agricultural productivity



Soil health



Salinity mitigation



Aboriginal economic and cultural opportunities

Map navigation

Making a data layer selection from any of the 5 themes and their drop-down boxes will result in that layer being displayed on the map.

Use the mouse to zoom and drag the map to any location.

Layers in ALL CAPS have sub-layers (e.g. BOUNDARIES). Sub-layers will only display if both the main layer and sub-layer boxes are ticked.

Zooming in/out is achieved by moving the mouse scroll wheel forward (zoom in) or back (zoom out). If the mouse is not equipped with a scroll wheel, use the zoom in/zoom out tool located on either the right side, or bottom left of the screen.

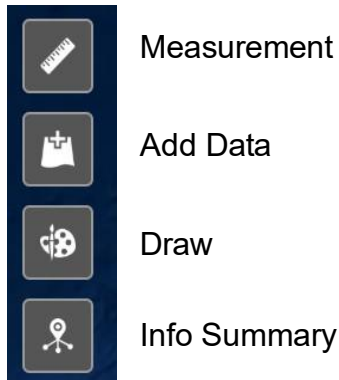
Given the volume of data, layers may need to be turned on and off as you navigate through the map to allow the information to be visible.

Greyed-out layers are too detailed to display if the map is zoomed out (e.g., Land Tenure). You will need to zoom in until the data becomes visible.

Click the legend icon to see detailed legend information. Information will display as layers are added to the map.

Display page

Four tools can be found on the top left of the screen.



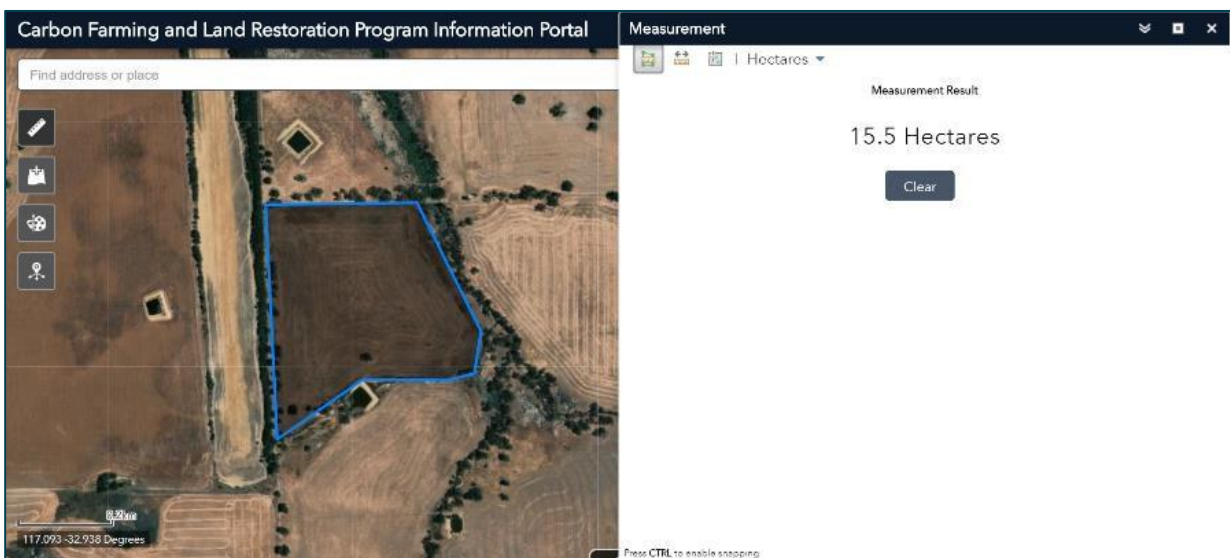
A scale is at the bottom left of the screen.
Find an address using the **search bar** at the top left of the screen.

Measurement

Select the measurement tool you would like to use – Area, Distance, or Location. Distance can measure length and perimeter. Location places a pindrop to mark a single point on the map and provide GPS coordinates.

Left click to begin tracing your project area and left click again to create a corner. Repeat until the total area is captured and Double left click to complete your shape.

Units of measurement can be changed via the drop down menu; and include hectares, metres, kilometres etc. Clicking the Clear button removes these from the display.



The measurement tool can be used to calculate the following:

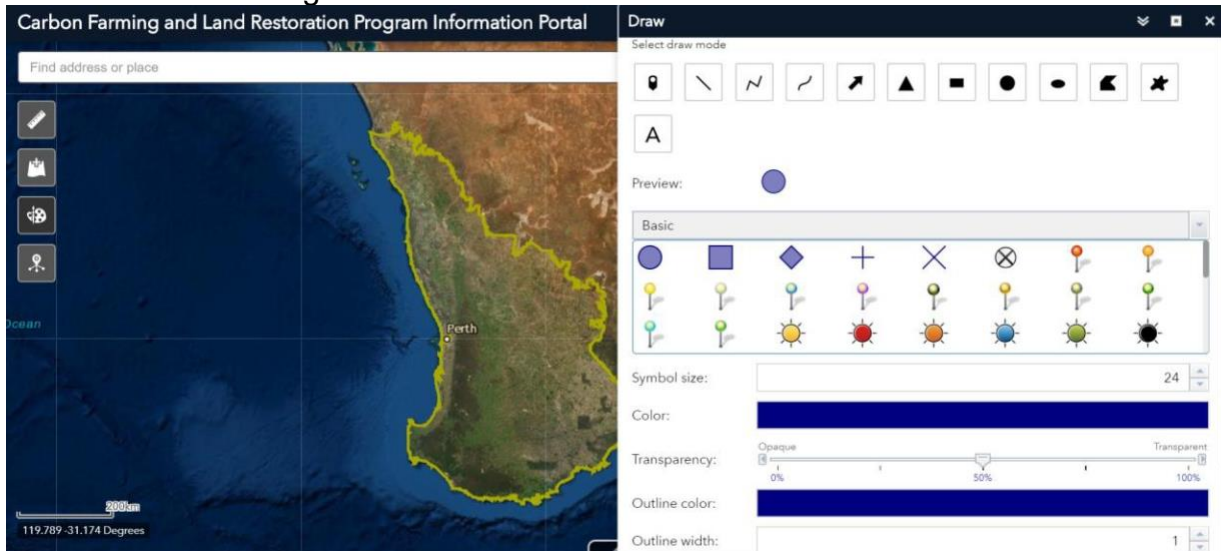
- Carbon Estimation area i.e. the project area
- Current vegetation cover (approximate %) in the project area
- Measurements for activities, i.e. length or hectares of planting / seeding
- Any other values that can be spatially measured using polygons or lines.

Add Data

Data can be uploaded as a file or via a URL. Accepted file formats are .shp, CSV, KML, GPX, GeoJSON.

Draw

This tool allows you to draw in a point, line, polygon, or add a label to the map. The colour, width, transparency, and size of draw tools can be adjusted. Click to start adding a shape or hold down and let go to finish.



Notes about drawing

Select drawing tools

- Select the drawing tool that suits your purposes. Drawing tools include points, several line options and polygon styles, and symbols such as circles, triangles, squares etc.
- More accurate 'drawing' can be achieved by zooming into your project / activity area at the closest resolution that captures the total draw area on the screen.

* Please note – Close the Draw tool to zoom in or out.




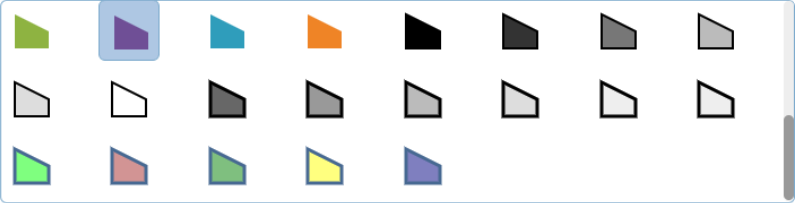
Text & draw colour, width & transparency


- Select the colour of the drawn tool – there are a number of predetermined options, however the shade of a selected colour can be changed by clicking on the 'Colour bar'; the transparency of the colour can be changed on the 'Transparency bar'.


***Handy hints:**

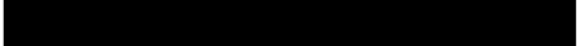
- We recommend 'testing' both text and draw functions prior to commencing
- You may find it easier to draw and view objects by changing the transparency to >50%
- Light coloured text may be easier to view depending on the background or imagery
- The 'Clear' function can be used to delete all text or objects
- 'Undo' will delete the last drawn text or object
- Use the 'Outline Colour & Width' features to make changes to your objects
- To draw a coloured outline only (no "fill" colour), change the Transparency to 100%
- You may need to change the colour and or size of text so that it displays well
- Font size and colour can be changed without re-entering text


Preview: 



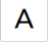
Color: 

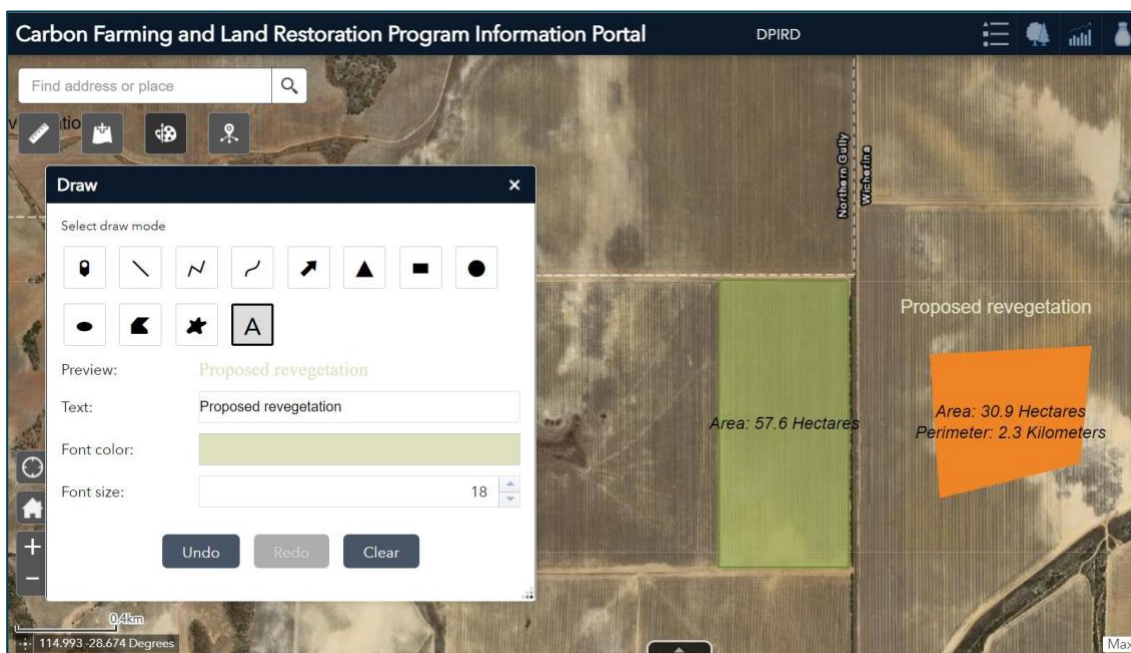
Transparency: 

Outline color: 

Outline width: 

Text boxes

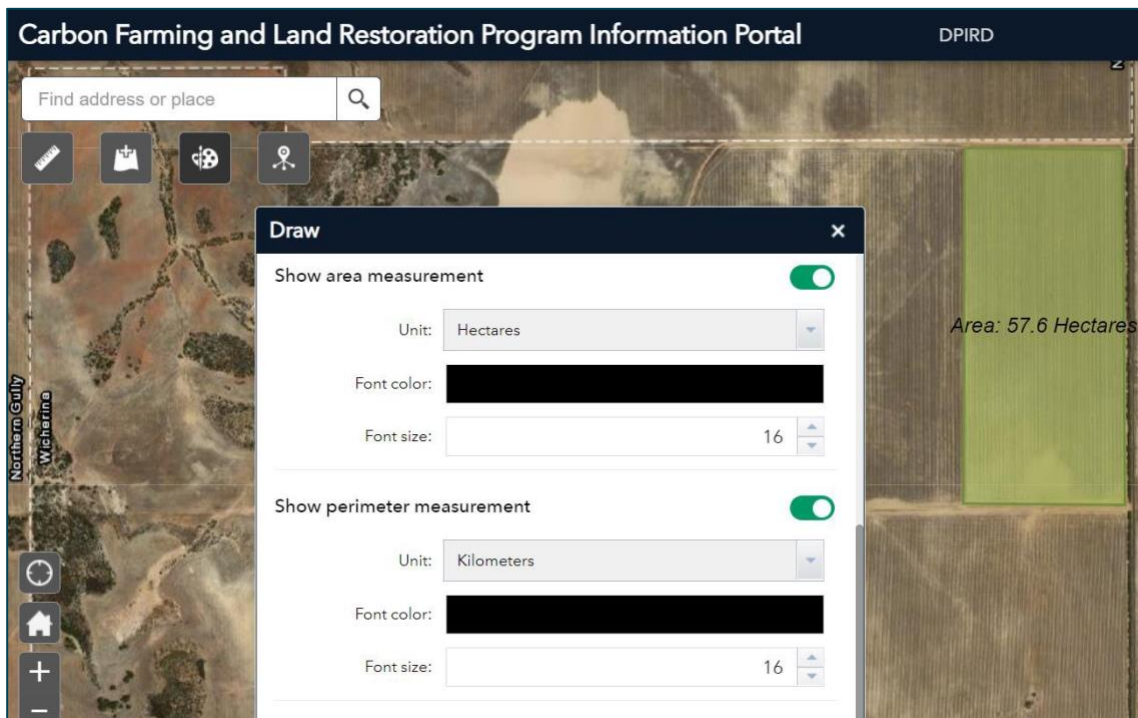
Text can be added using the text tool . When you have entered the required text, a pop-up box will appear at your cursor and will prompt where the point can be added. If you want to reposition the text box, use the undo feature and move the text box.



Area & perimeter measurements

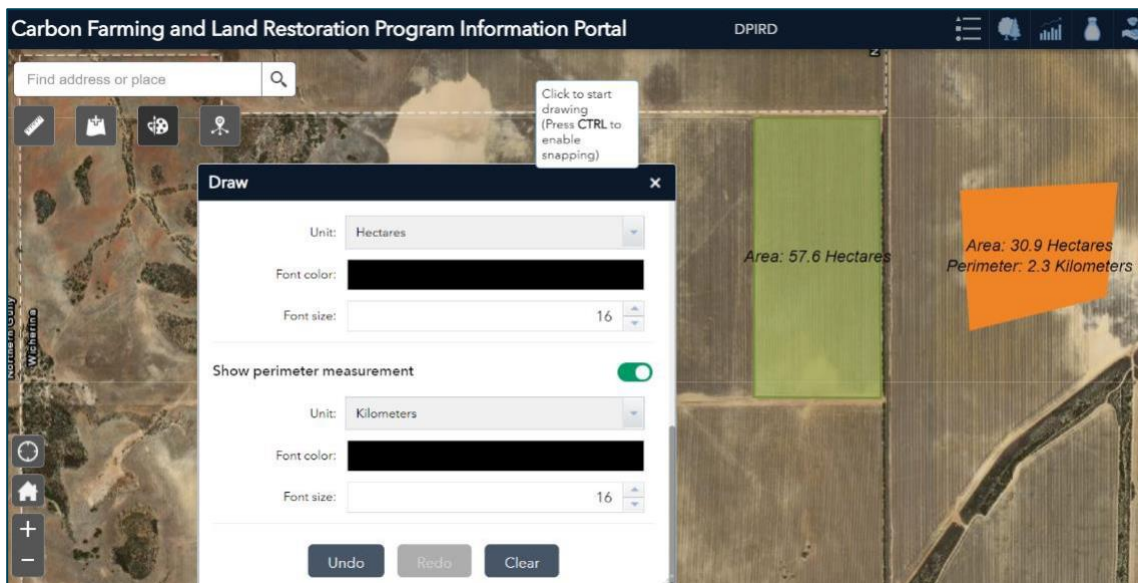
The **‘Show area measurement’** and **‘Show perimeter measurement’** features can be enabled to automatically calculate and display the units of measurement once a feature has been drawn.

Units of measurement can be changed via the drop down menus.

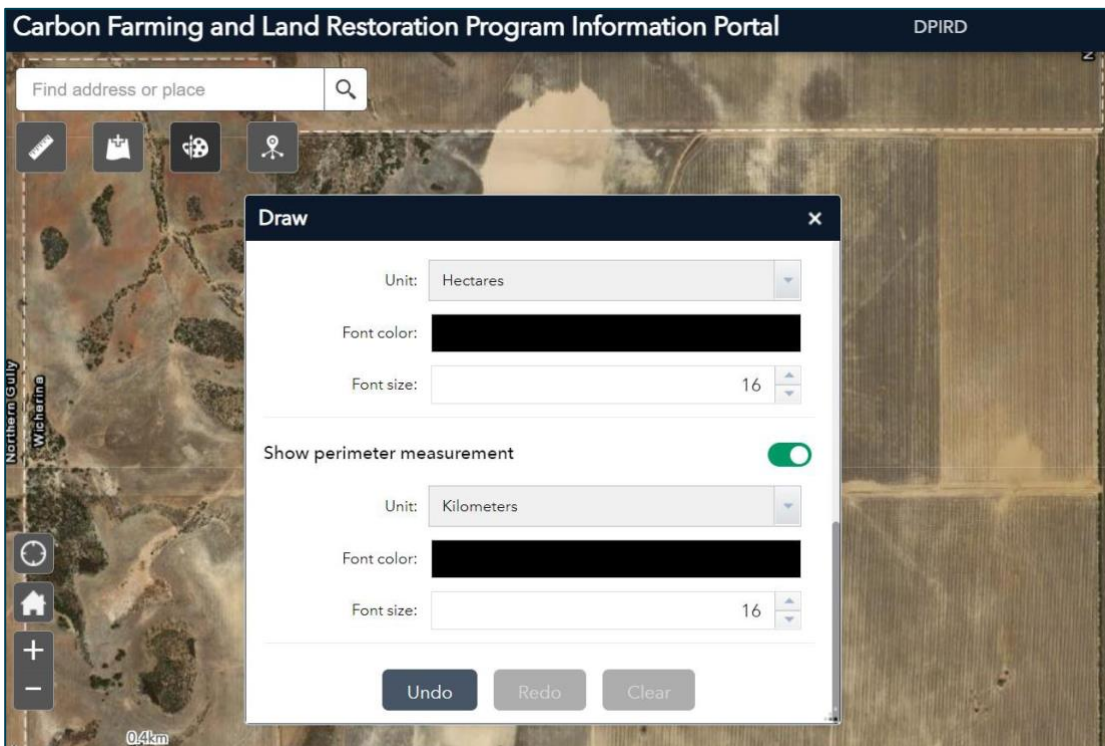


Deleting drawn areas & text

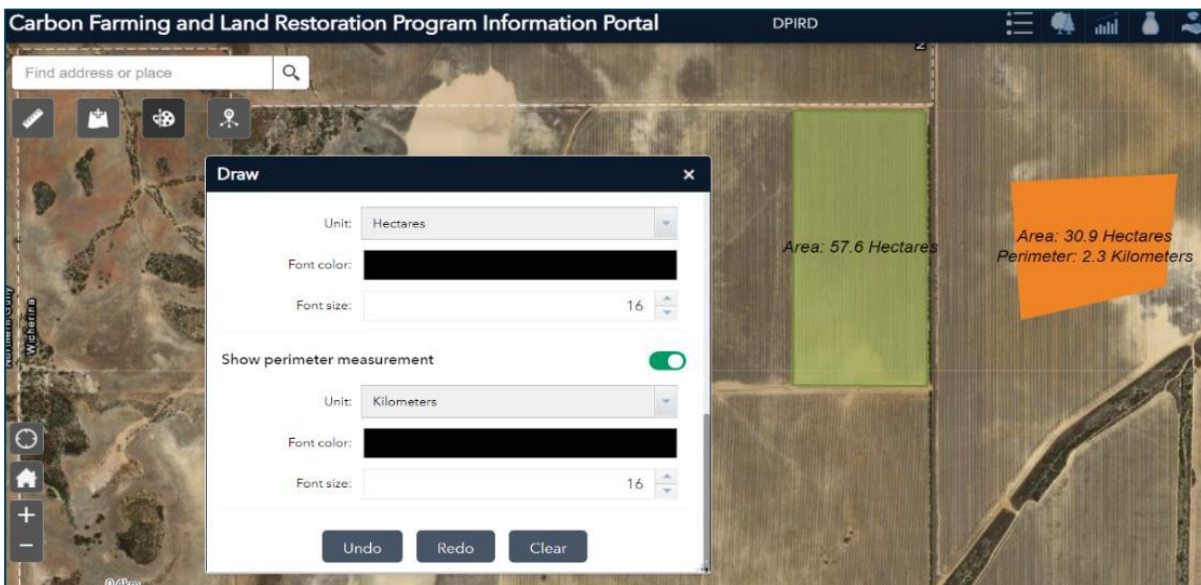
Use the **‘Undo’** function to delete the last object drawn. In the example below, if the green area (57.6 hectares) was drawn first and the orange area (30.9 hectares) drawn second, **‘Undo’** will delete the orange image only.



Use the 'Clear' To delete ALL drawn images and text.



To re-establish image/s that have just been 'Cleared', select the 'Undo' feature.



Info Summary



Provides a count and list of features that are visible in the current map extent as you zoom in or out. Values are only shown if a layer is turned on and visible.

Three tools can be found on the right side, or bottom left of the screen, depending on your browser.



My Location

Default Extent

Zoom in and out

My Location



Easily find your property by selecting this tool. Your current location will be indicated by a blue dot. You may have to grant permission for your web browser to access your location.

Default Extent



Return to the original map extent.

Zoom in and out



Manually adjust the map extent by zooming in and out.

Layers toolbar

At the top of screen, a toolbar allows you to view all the layers in the project and helps you manage their visibility.

Investment priorities












Five of the icons in the layers panel depict the CF-LRP investment priorities

- Biodiversity and conservation
- Agricultural productivity
- Salinity mitigation
- Soil health
- Aboriginal economic and cultural

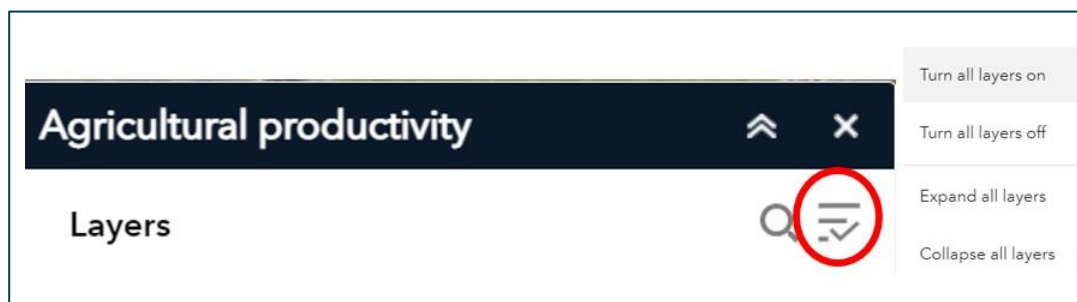
Data layers contained within each of these five themes can assist in identifying and validating the potential co-benefits associated with a project.

Click on the arrow to the left of the layer name to view legend. Layers named in all-capitals indicates a group that can be expanded.

The following toolbars and datasets are available in the Portal:

	View what layers are currently set as visible.
	Biodiversity & conservation – layers available include, Threatened & Priority fauna, Threatened & Priority flora, Threatened Ecological Communities, Water – hydrography, Ramsar sites, Natural Diversity recovery Catchments (existing & potential), Water Resource Recovery Catchments, Native vegetation extent, DBCA lands of Interest, DBCA Legislated lands and Waters
	Agricultural Productivity – layers available include, Waterlogging risk, Water repellence risk, Average height above valley floor, Land Capability
	Salinity mitigation – layers available include, Threatened Ecological Communities, Threatened & Priority fauna and flora at risk from salinity, Natural Diversity recovery Catchments (existing & potential), Priority landscapes at risk from salinity, Salinity risk, Average height above valley floor and salinity mapping
	Soil health - layers available include, Water erosion, Wind erosion
	Aboriginal economic and cultural – layers available include, Aboriginal heritage places, Aboriginal Lands Trust Estate
	General – layers available include, Area-based ACCU Scheme projects, agricultural properties, south west land division, local government authorities
	Print – more information on the print functionality can be found here
	More –information on the print functionality can be found here

After selecting an icon, three buttons to the right of the heading allow you to minimise, maximise, and close the layer group. A search button allows you to look for key words.



General



View layers that are non-specific to the investment priorities.

Print



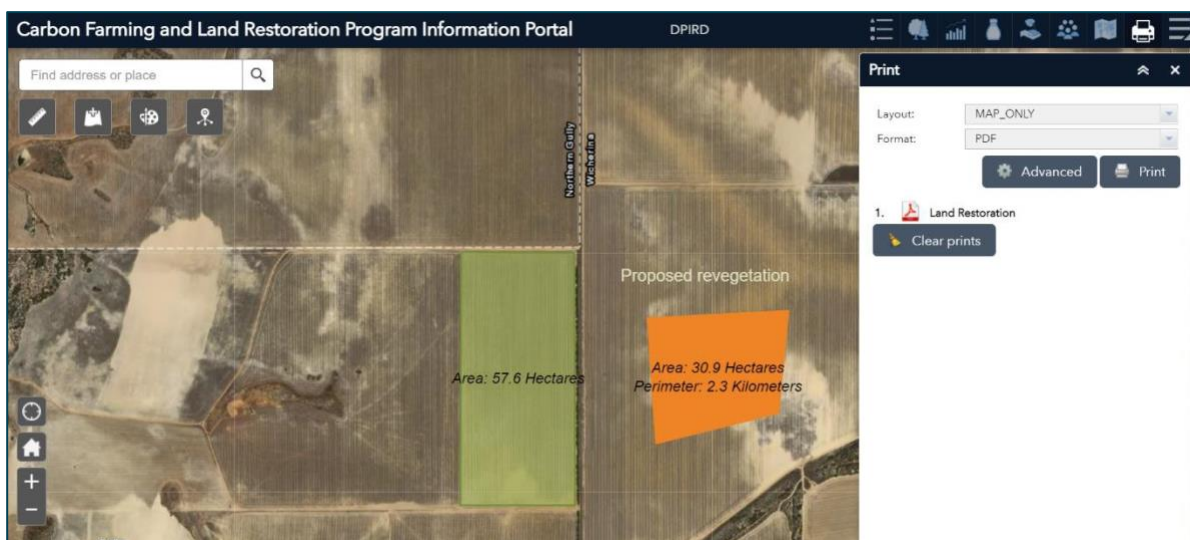
This tool allows you to download and save maps. Select the Print button to begin the download process.

Selecting MAP_ONLY as the layout will save the current map extent and all visible layers.

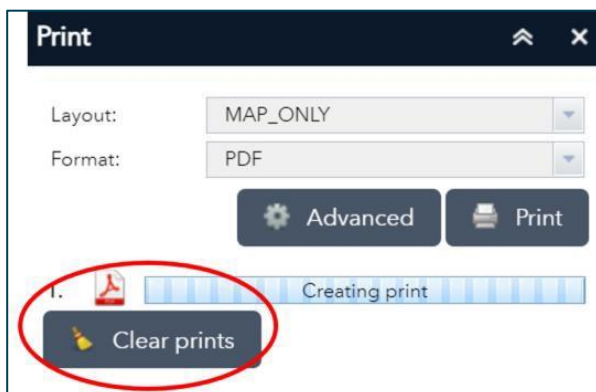
Selecting A4 Portrait / A4 Landscape / A3 Portrait / A3 Landscape as layouts includes a title, scale, and legend of visible layers. As attachments to an Expression of Interest, this is the preferred layout.

Maps can be saved in several different formats (AIX, EPS, GIF, JPG, PDF, PNG32, PNG8, SVG, SVGZ). As attachments to an Expression of Interest, preferred formats are JPG and PDF.

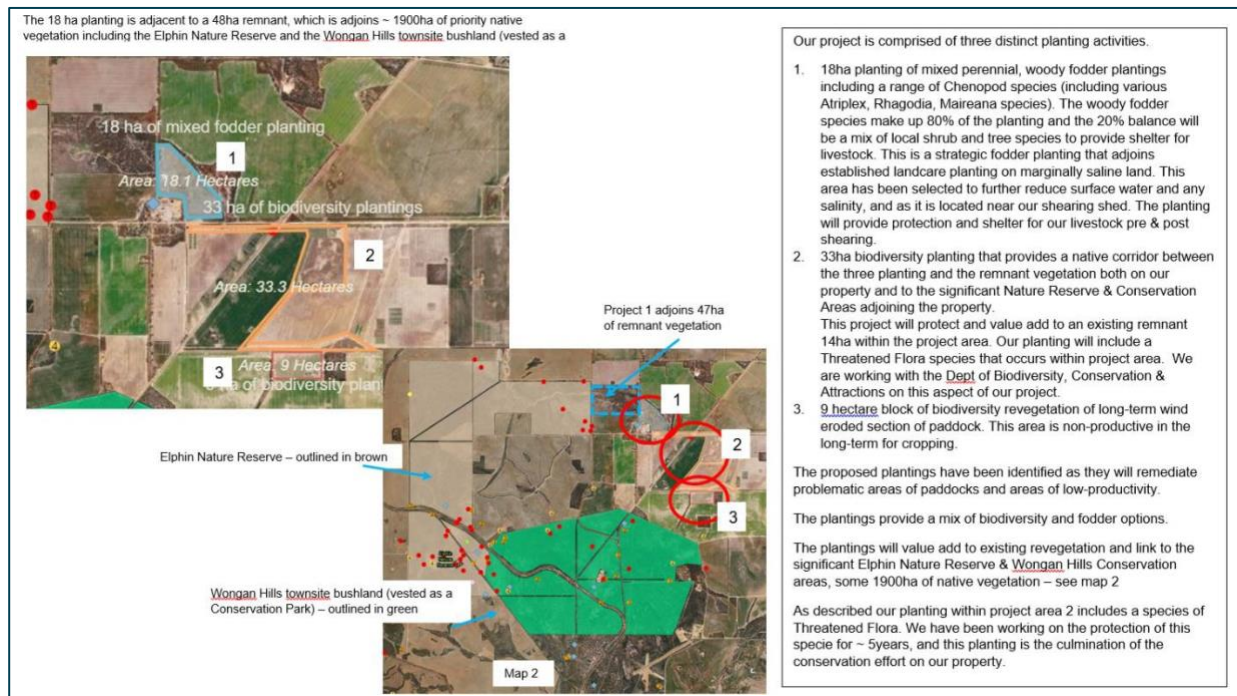
*Handy hint: you may need to re-centre or zoom out to fit all of your property and drawn feature and text on a Print version.



You can use the Clear prints feature to delete PDFs that you have previously created.






* An alternative way to provide a map is to take a screenshot of your project in the Portal and paste it into a Word document or similar application. You may find this easier if you want to add additional text to describe the activities and other attributes of the site. An example of using screenshots pasted into Word has been provided below.



More



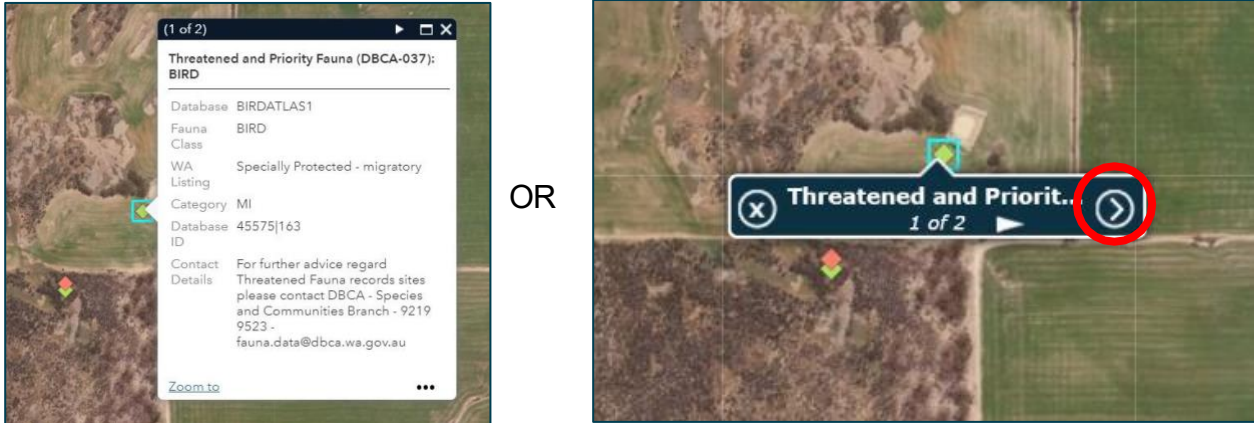
Your browser may not display all available tools. Select the More icon to view additional tools.

- Basemap gallery  - you can change which basemap is displayed, including satellite and topographic imagery.
- About  – provides an overview of the CF-LRP investment priorities and use of the Co-benefits Portal.
- Bookmark  – click to bookmark the current map location and zoom.

Learn more about map attributes

By selecting a visible feature (e.g., threatened and priority fauna, Ramsar site). You can learn more about that feature.

Depending on your browser display, you may have to click the arrow on the pop up to learn more.





Click on the arrow located at the base of the screen to open the attributes table and learn more about each feature on the map, layer by layer.



Each row in the table represents a feature and each column contains a particular piece of information about the feature.

Attributes can be filtered by the map extent. This can help you see exactly what features are near your property and the proposed project location.

You can filter the attribute table to only display certain features.

Select the Options drop down menu  and select filter  Filter

As an example, you could filter the Fauna class on the Threatened and priority fauna layer to only display 'BIRD' and 'REPTILE' features.

Important Disclaimer

The Chief Executive Officer of the Department of Primary Industries and Regional Development and the State of Western Australia accept no liability whatsoever by reason of negligence or otherwise arising from the use or release of this information or any part of it.

Copyright © State of Western Australia (Department of Primary Industries and Regional Development), 2025.